



PAV-10 - Rotary Airlock

HEAVY DUTY SERIES ROTARY AIRLOCK VALVE



PRATER 10" ROTARY AIRLOCK

AVAILABLE FEATURES

- Air purged seals
- Food grade Teflon seals
- Food grade white epoxy paint
- 304 or 316 stainless steel body & rotor
- Hastelloy body and rotor
- Shear pins / Zero speed switch
- High temp bearings & seals for operation to 1100° F
- Wear & corrosion resistant coatings
- Inlet baffle / Inlet v-plow for shear protection
- Discharge adapter / Finger guards
- Bolt on or flexible tips
- Vented pockets / Vented housing
- Die cut flange gaskets
- Manual hand crank or pneumatic maintenance gates available
- Drive: 1 HP, TEFC, or TEXP / Various voltages available



- Constructed of high strength cast iron or stainless steel body & end plates
- 8 blade, mild steel, open-end rotor with welded pocket bottoms
- Self-adjusting, maintenance-free packing gland assemblies
- Outboard mounted, maintenance-free bearings
- Universal flanges custom-drilled at no extra charge
- Complimentary temperature compensation
- End plates pre-drilled & tapped for optional shaft air purge
- Quick and easy end plate removal using included jack bolt holes
- Operating temperature up to 500° F with standard components
- Keyed shaft extension for most drive assemblies
- Premium, 1 HP, inverter duty, helical gear motor
- Standard models in stock

NFPA-69
MSHA
V-Plow
10-Bar
PSR11
CSA

**THE ONLY AIRLOCK
 IN NORTH AMERICA TO BE
 TESTED & CERTIFIED
 TO COMPLY WITH NFPA-69**



praterindustries.com

Capacity:

Theoretical: 0.53 cu. Ft.
(15.0 L) / rev.
Practical: 0.42 cu. Ft.
(11.93 L) / rev.

Housing:

Material: Gray Cast Iron
Thickness: 0.625" x 0.31"
15.9 x 7.9 mm

Flanges:

Square Outline: Drilled
Round or Square
Inlet Size: 10.0" / 254 mm
Outlet Size: 10.0" / 254 mm
Thickness: 0.5" / 12.7 mm

Bearings:

Type: Ball Bearing
Size: 1.44" / 36.5 mm
Life Rating L-10: > 60,000 hours
Outboard Mounted: Yes

Shaft:

Material: Mild or Stainless Steel
Drive Stub Shaft D: 1.44" / 36.5 mm
Packing Seal: Abrasion Resistant

Drive Includes:

1.0 Hp, 60Hz, 3 Ph
230/460 V. Motor, Motor Base
Gear Reducer, Chain Drive
TEFC & OSHA Guard

**Approx. Weight & Dimensions:
Airlock Only**

Length: 25-3/16" / 640 mm
Width: 15.0" / 381 mm
Height: 15.0" / 381 mm
Weight: 230 lbs / 104 kg
Shipping Weight: 275 lbs / 125 kg

With Drive & Standard Guard:

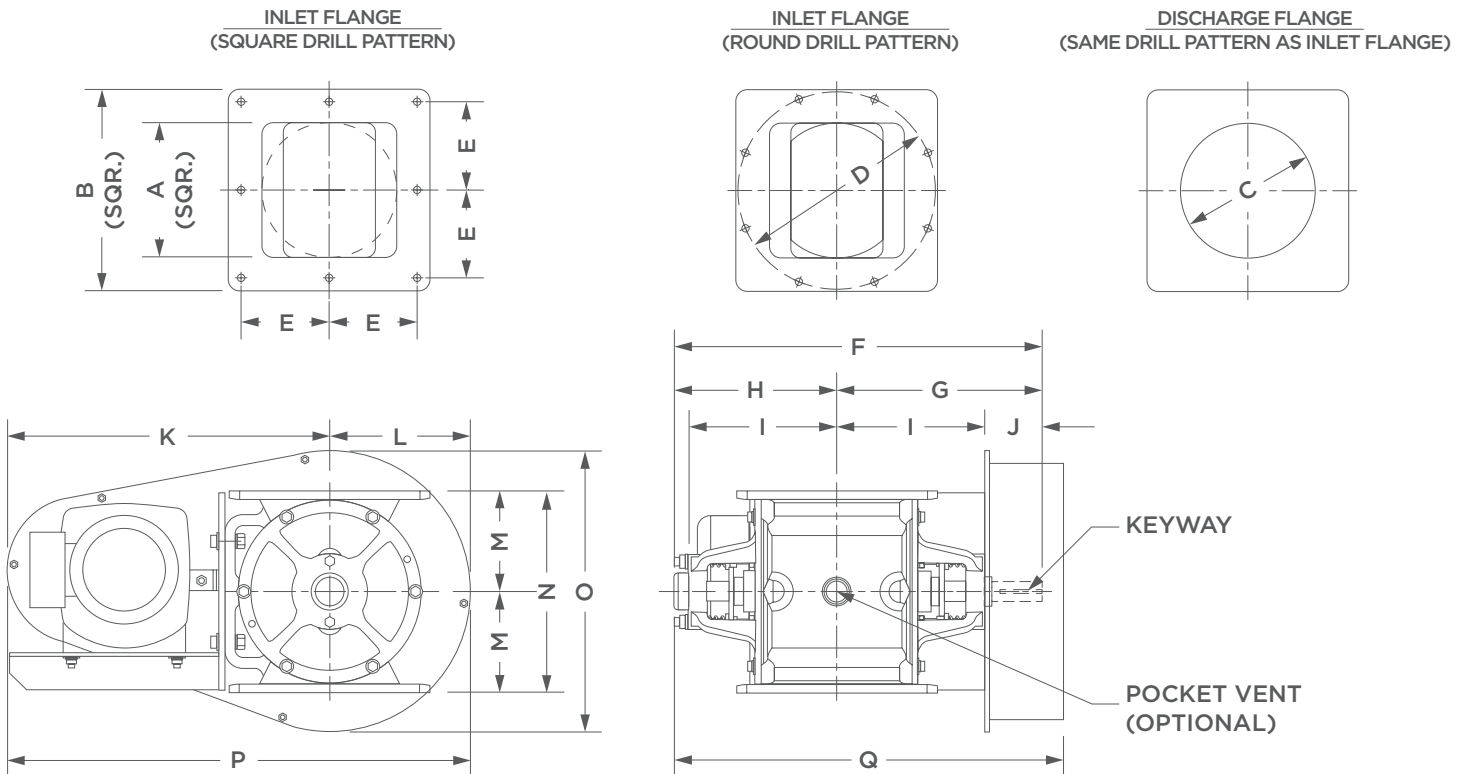
Length: 27-1/4" / 692 mm
Width: 25-3/4" / 654 mm
Height: 16-3/4" / 425 mm
Weight: 280 lbs / 127 kg
Shipping Weight: 325 lbs / 147 kg

Sound Level:

< 75 db scale A

Paint:

Primer: Gray Chromate
Finish: White, Urethane



MODEL	DISPLACEMENT (CU. FT./REV)	DIMENSIONS (INCHES)															HOLE (QTY)	KEYWAY W X D	DRIVE SHAFT DIA.	FLANGE THK.	WEIGHT (LBS)	WEIGHT W/ DRIVE (LBS)		
		A	B	C	D	E	F	G	H	I	J	K	L	M	N	O							P	Q
PAV-10	.53	10	15	10	14 1/4	6	25 3/16	14 1/8	11 1/16	10 1/8	3 1/2	19 1/4	8 3/8	7 1/2	15	16 3/4	27 1/4	25 3/4	8	3/8 x 3/16	1 7/16	1/2	230	325



2 Sammons Court, Bolingbrook, IL 60440
1-877-AIRLOCK (247-5625) • praterindustries.com