



# PAV-12 - Rotary Airlock

## HEAVY DUTY SERIES ROTARY AIRLOCK VALVE



### PRATER 12" ROTARY AIRLOCK

#### AVAILABLE FEATURES

- Air purged seals
- Food grade Teflon seals
- Food grade white epoxy paint
- 304 or 316 stainless steel body & rotor
- Hastelloy body and rotor
- Shear pins / Zero speed switch
- High temp bearings & seals for operation to 1100° F
- Wear & corrosion resistant coatings
- Inlet baffle / Inlet v-plow for shear protection
- Discharge adapter / Finger guards
- Bolt on or flexible tips
- Vented pockets / Vented housing
- Die cut flange gaskets
- Manual hand crank or pneumatic maintenance gates available
- Drive: 1.5 HP, TEFC, or TEXP / Various voltages available



- Constructed of high strength cast iron or stainless steel body & end plates
- 8 blade, mild steel, open-end rotor with welded pocket bottoms
- Self-adjusting, maintenance-free packing gland assemblies
- Outboard mounted, maintenance-free bearings
- Universal flanges custom-drilled at no extra charge
- Complimentary temperature compensation
- End plates pre-drilled & tapped for optional shaft air purge
- Quick and easy end plate removal using included jack bolt holes
- Operating temperature up to 500° F with standard components
- Keyed shaft extension for most drive assemblies
- Premium, 1.5 HP, inverter duty, helical gear motor
- Standard models in stock

**NFPA-69**  
**MSHA**  
**V-Plow**  
**10-Bar**  
**PSR11**  
**CSA**

**THE ONLY AIRLOCK**  
**IN NORTH AMERICA TO BE**  
**TESTED & CERTIFIED**  
**TO COMPLY WITH NFPA-69**



[praterindustries.com](http://praterindustries.com)

**Capacity:**

Theoretical: 0.95 cu. Ft.  
(26.9 L) / rev.  
Practical: 0.76 cu. Ft.  
(21.5 L) / rev.

**Housing:**

Material: Gray Cast Iron  
Thickness: 0.875" x 0.31"  
22.2 x 7.9 mm

**Flanges:**

Square Outline: Drilled  
Round or Square  
Inlet Size: 12.0" / 305 mm  
Outlet Size: 12.0" / 305 mm  
Thickness: 0.5" / 12.7 mm

**Bearings:**

Type: Ball Bearing  
Size: 1.94" / 49.3 mm  
Life Rating L-10: > 60,000 hours  
Outboard Mounted: Yes

**Shaft:**

Material: Mild or Stainless Steel  
Drive Stub Shaft D: 1.75" / 44.5 mm  
Packing Seal: Abrasion Resistant

**Drive Includes:**

1.5 Hp, 60Hz, 3 Ph  
230/640 V. Motor, Motor Base  
Gear Reducer, Chain Drive  
TEFC & OSHA Guard

**Approx. Weight & Dimensions:  
Airlock Only**

Length: 29-15/16" / 760 mm  
Width: 18.0" / 457 mm  
Height: 18-1/8" / 460 mm  
Weight: 420 lbs / 191 kg  
Shipping Weight: 465 lbs / 211 kg

**With Drive & Standard Guard:**

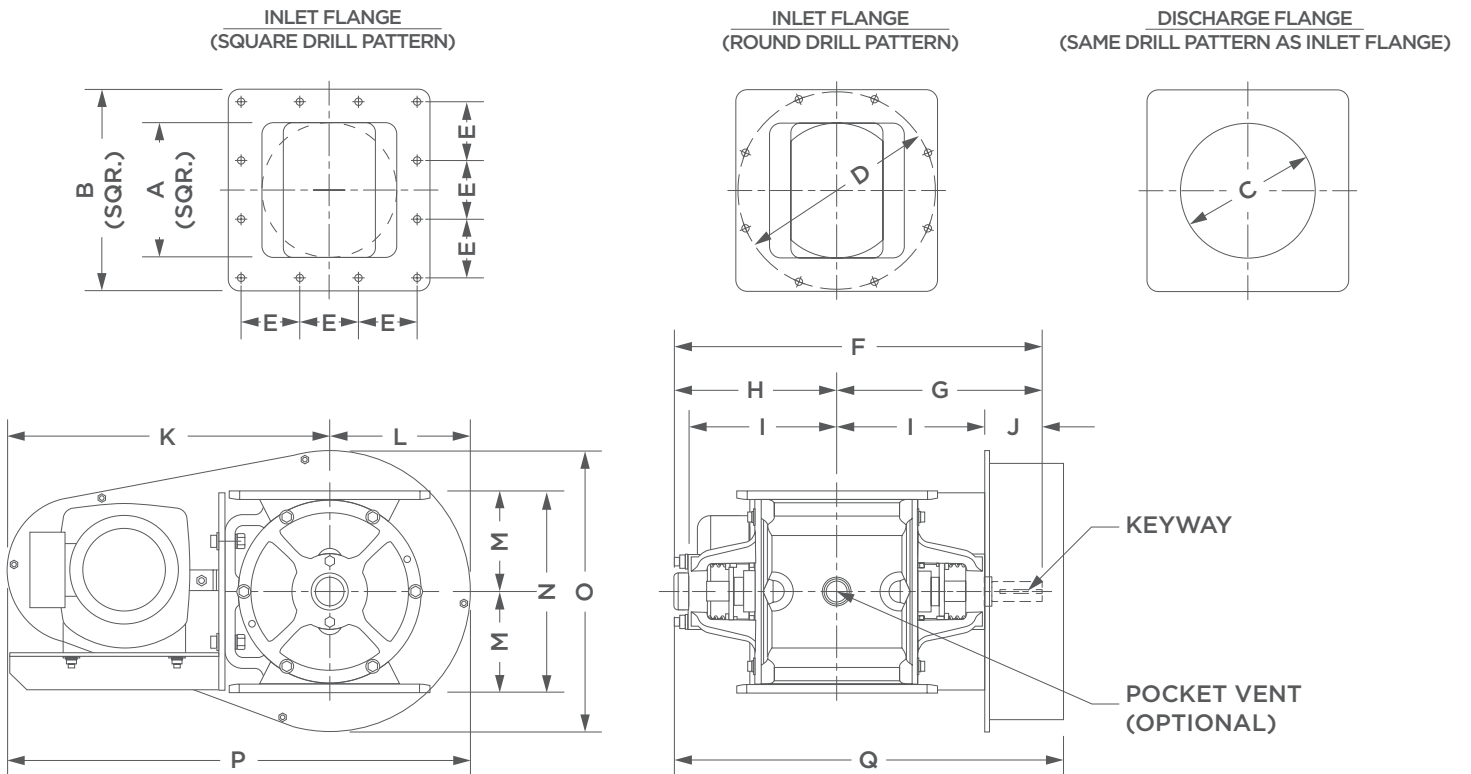
Length: 37-15/32" / 952 mm  
Width: 30-7/16" / 773 mm  
Height: 19-1/8" / 486 mm  
Weight: 560 lbs / 254 kg  
Shipping Weight: 605 lbs / 275 kg

**Sound Level:**

< 75 db scale A

**Paint:**

Primer: Gray Chromate  
Finish: White, Urethane



MODEL	DISPLACEMENT (CU. FT./REV)	DIMENSIONS (INCHES)														HOLE (QTY)	KEYWAY W X D	DRIVE SHAFT DIA.	FLANGE THK.	WEIGHT (LBS)	WEIGHT W/ DRIVE (LBS)			
		A	B	C	D	E	F	G	H	I	J	K	L	M	N							O	P	Q
PAV-12	.95	12	18	12	17	7 3/4	29 15/16	16 11/16	13 1/4	12	3 3/8	27 29/32	9 9/16	9 1/16	18 1/8	19 1/8	37 15/32	30 7/16	8	3/8 x 3/16	1 3/4	5/8	420	560



2 Sammons Court, Bolingbrook, IL 60440  
1-877-AIRLOCK (247-5625) • [praterindustries.com](http://praterindustries.com)