



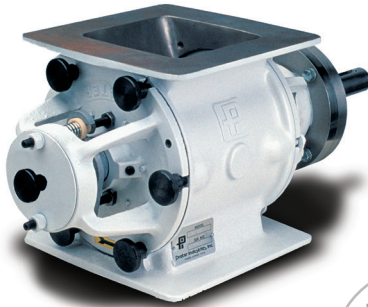
QTA Rotary Airlock

Quick-Take-Apart (QTA) SERIES

No tools are necessary for disassembly, cleaning and re-assembly of these airlocks.

Available in 6", 8", 10" and 12" sizes. These "QTA" Airlocks have all the standard features of the entire Prater line of "C/S" Airlocks that includes the exclusive Self-Adjusting Packing Glands and the Round or Square drilling pattern flanges. They are available in stainless steel (304 or 316) and mild steel cast body with cast end plates.

- The Basic Valve Consists Of A Cast Iron Body And End Plates
- Square Inlet And Round Outlet- With Universal Flange
- Flanges Custom Drilled To Customer's Pattern
- End Plates Are Drilled And Tapped For Optional Air Purged Seals
- 8 Blade, Mild Steel, Open Ended Rotor With Welded Pocket Bottoms
- (2) Sealed Outboard Bearings - Lubricated For Life
- Jack Bolt Holes Are Drilled In End Plates For Quick And Easy Removal
- (2) Self Adjusting Packing Gland Assemblies
- Slide Rail Option Available



AVAILABLE OPTIONS

- Air Purge Seals
- Food Grade White Epoxy Paint
- Inlet Baffle
- Discharge Adapter
- Vented Pockets
- Neoprene Flange Gasket

Bearings

Type: Ball Bearing
 Life Rating L-1Q > 60,000 hrs
 Outboard Mounted: Yes

Housing

Material: Cast Iron 316 SS

Flanges

Square Outline: Drilled Round or Square

Sound Level

< 75 db scale A

Rotor

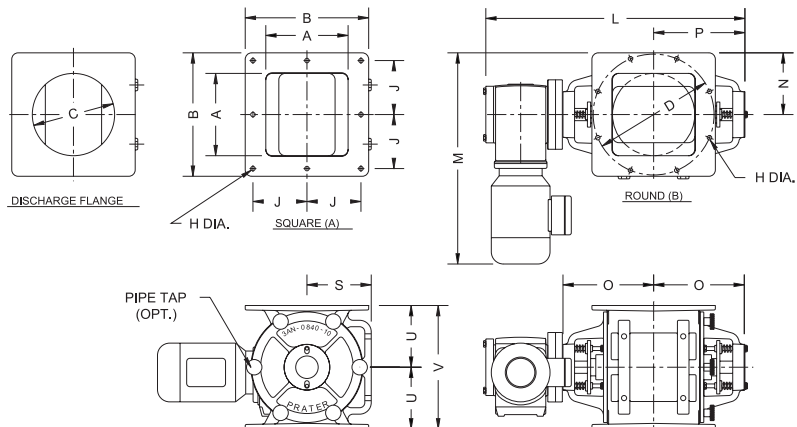
Type: Fabricated
 Material: Mild Steel or SS
 Number of Blades: 8
 Blade Thickness: 0.38" (9.5mm)
 Design Radial Clearance: 0.006"
 (at operating temp)

Paint

Primer: Gray Chromate
 Finish: White Urethane

Drive Includes

60 Hz, 3 Ph, 230/460 V Direct Drive
 Gear Reducer & Motor



Model	A	B	C Dia.	D Dia.	H
QTA-6 C/S	6	10	6	9-1/2	7/16
QTA-8 C/S	8	12	8	11-3/4	7/16
QTA-10 C/S	10	15	10	14-1/4	7/16
QTA-12 C/S	12	18	12	17	7/16

Model	J	L	M	N	O
QTA-6 C/S	4-5/16	23-1/2	19-9/16	5	7-13/16
QTA-8 C/S	5-1/4	25-3/16	20-9/16	6	8-13/16
QTA-10 C/S	6	28-1/2	27-5/8	7-1/2	10-1/8
QTA-12 C/S	7-3/4	29-1/8	29-1/8	9	12

Model	P	S	U	V	Motor H/P
QTA-6 C/S	7-7/8	5-1/4	5	10	1/2
QTA-8 C/S	8-7/8	6-1/4	6	12	1/2
QTA-10 C/S	10-3/16	7-3/4	7-1/2	15	3/4
QTA-12 C/S	12-1/16	9-1/4	9-1/16	18-1/8	1

**THE ONLY AIRLOCK
 IN NORTH AMERICA TO BE
 TESTED & CERTIFIED
 TO COMPLY WITH NFPA-69**

